

PROJECT
BALLIEMEANOCH
PUMPED STORAGE
HYDRO

CLIENT
ILI (Borders PSH) Ltd.

CONSULTANT
AECOM Limited
177 Bothwell Street
Glasgow, B2 7ER
T +44(0)141 202 0500
www.aecom.com

LEGEND

- Development Boundary
- Headpond
- Headpond Embankments
- Peat Probes**
- 0.00 - 0.50
- 0.51 - 1.00
- 1.01 - 1.50
- 1.51 - 2.00
- 2.01 - 3.00
- 3.01 - 4.00
- 4.01 - 5.00
- 5.01 - 6.00
- 6.01+
- Tunnel Portals
- Switching Station
- Temporary Construction Compound
- Permanent Construction Compound
- B840 Diversion - Permanent, New, Excavated
- B840 Diversion - Permanent, Upgrade, Excavated
- Spillway
- Access Track - Temporary, New, Excavated
- Access Track - Permanent, New, Excavated
- Access Track - Permanent, New, Floating
- Access Track - Permanent, Upgrade, Excavated
- Proposed Blarghour wind farm access track

NOTES

Reproduced from Ordnance Survey digital map data © Crown copyright 2023.

ISSUE PURPOSE

FINAL

PROJECT NUMBER

60570241

FIGURE TITLE

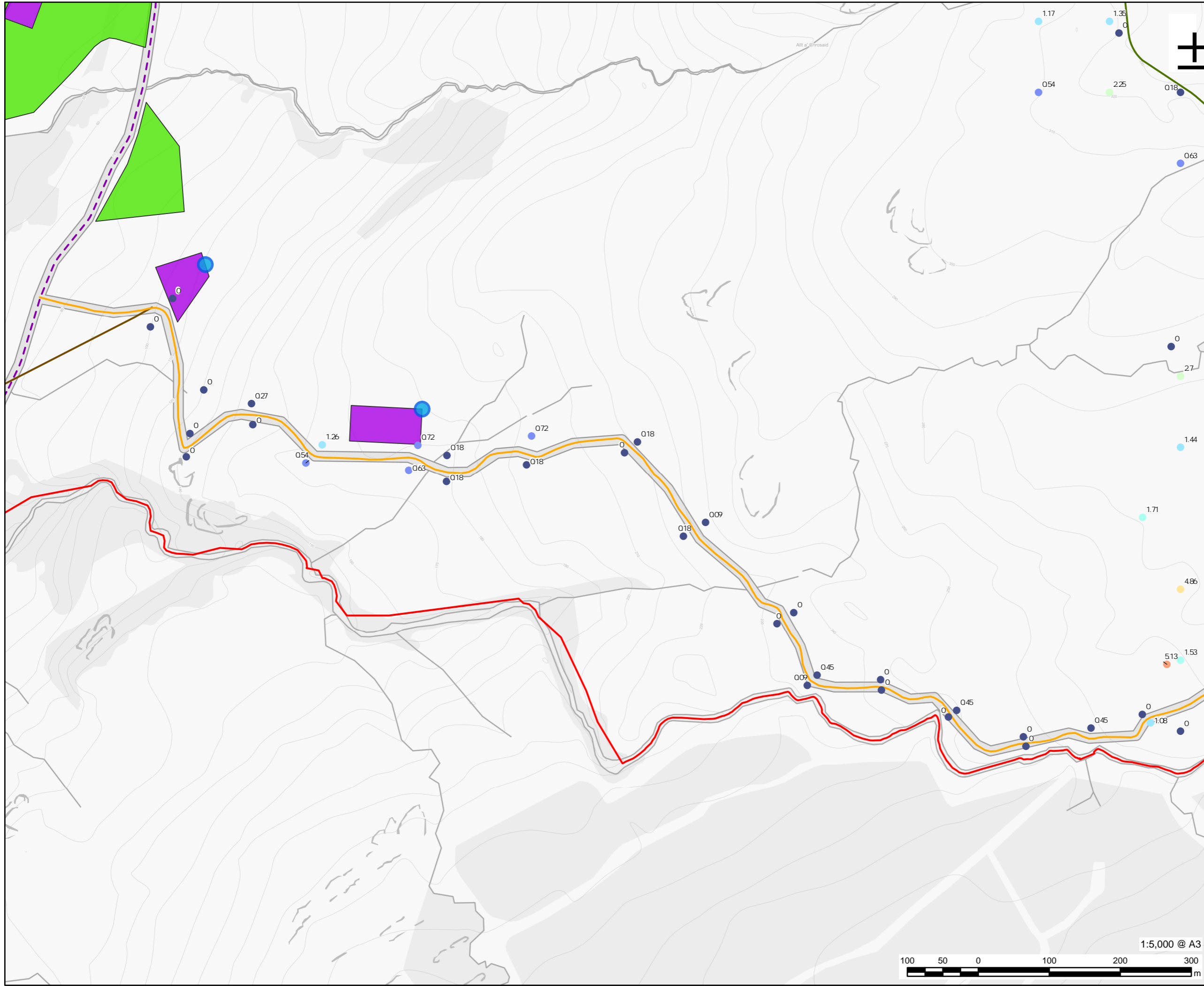
Peat Probe Survey Results (Overview)

FIGURE NUMBER

Figure 10.4 - Page 1



This drawing has been prepared for the use of AECOM's client. It may not be used, modified, reproduced or relied upon by third parties, except as signed by AECOM or as required by law. AECOM accepts no responsibility, and denies any liability whatsoever, for any party that uses or relies on this drawing without AECOM's express written consent. Do not scale. All measurements must be obtained from the stated dimensions.



PROJECT
BALLIEMEANOCH
PUMPED STORAGE
HYDRO

CLIENT
 ILI (Borders PSH) Ltd.

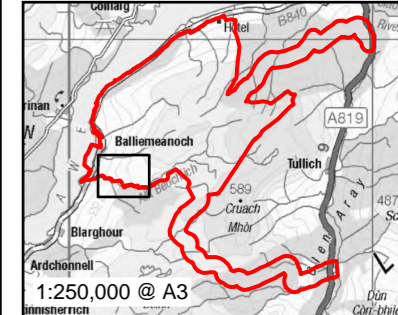
CONSULTANT
 AECOM Limited
 177 Bothwell Street
 Glasgow, B2 7ER
 T +44(0)141 202 0500
 www.aecom.com

LEGEND

- Development Boundary
- 0.00 - 0.50
- 0.51 - 1.00
- 1.01 - 1.50
- 1.51 - 2.00
- 2.01 - 3.00
- 4.01 - 5.00
- 5.01 - 6.00

Above Ground Infrastructure

- B840 Diversion - Permanent, Upgrade, Excavated
- Access Track - Temporary, New, Excavated
- Access Track - Permanent, New, Excavated
- Access Track - Permanent, Upgrade, Excavated
- Tunnel Portals
- Temporary Construction Compound
- Permanent Construction Compound



NOTES
 Reproduced from Ordnance Survey digital map data © Crown copyright 2023.

ISSUE PURPOSE
 FINAL

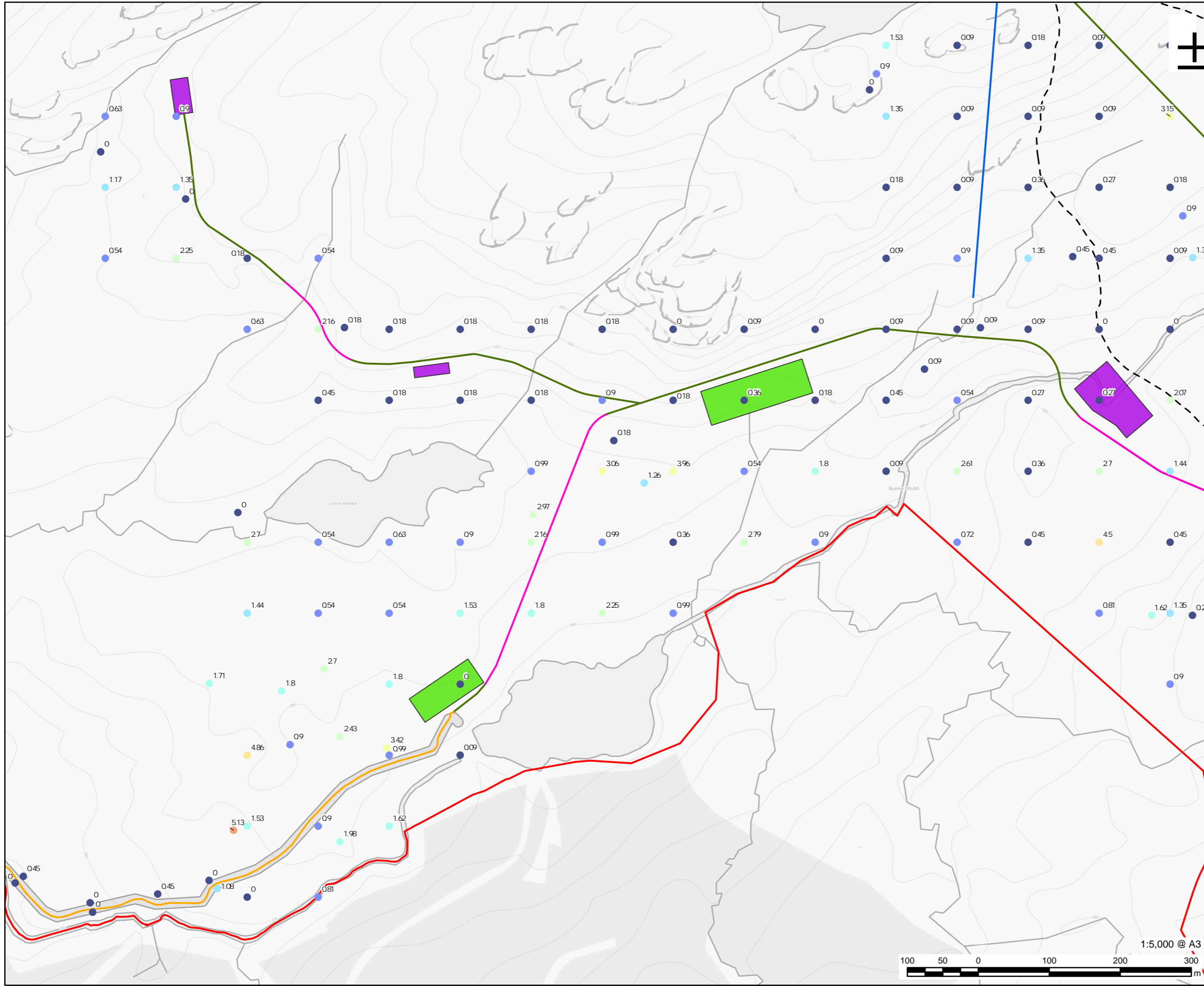
PROJECT NUMBER
 60570241

FIGURE TITLE
 Peat Probe Survey Results

FIGURE NUMBER
 Figure 10.4 - Page 2



This drawing has been prepared for the use of AECOM's client. It may not be used, modified, reproduced or relied upon by third parties, except as signed by AECOM or as required by law. AECOM accepts no responsibility, and denies any liability whatsoever, for any party that uses or relies on this drawing without AECOM's express written consent. Do not scale. All measurements must be obtained from the stated dimensions.

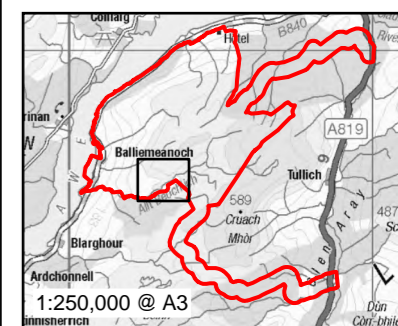


PROJECT
BALLIEMEANOCH
PUMPED STORAGE
HYDRO

CLIENT
ILI (Borders PSH) Ltd.

CONSULTANT
 AECOM Limited
 177 Bothwell Street
 Glasgow, B2 7ER
 T +44(0)141 202 0500
 www.aecom.com

- LEGEND**
- Development Boundary
 - Headpond
 - Headpond Embankments
 - 0.00 - 0.50
 - 0.51 - 1.00
 - 1.01 - 1.50
 - 1.51 - 2.00
 - 2.01 - 3.00
 - 3.01 - 4.00
 - 4.01 - 5.00
 - 5.01 - 6.00
- Above Ground Infrastructure**
- Spillway
 - Access Track - Permanent, New, Excavated
 - Access Track - Permanent, New, Floating
 - Access Track - Permanent, Upgrade, Excavated
 - Temporary Construction Compound
 - Permanent Construction Compound



NOTES
 Reproduced from Ordnance Survey digital map data © Crown copyright 2023.

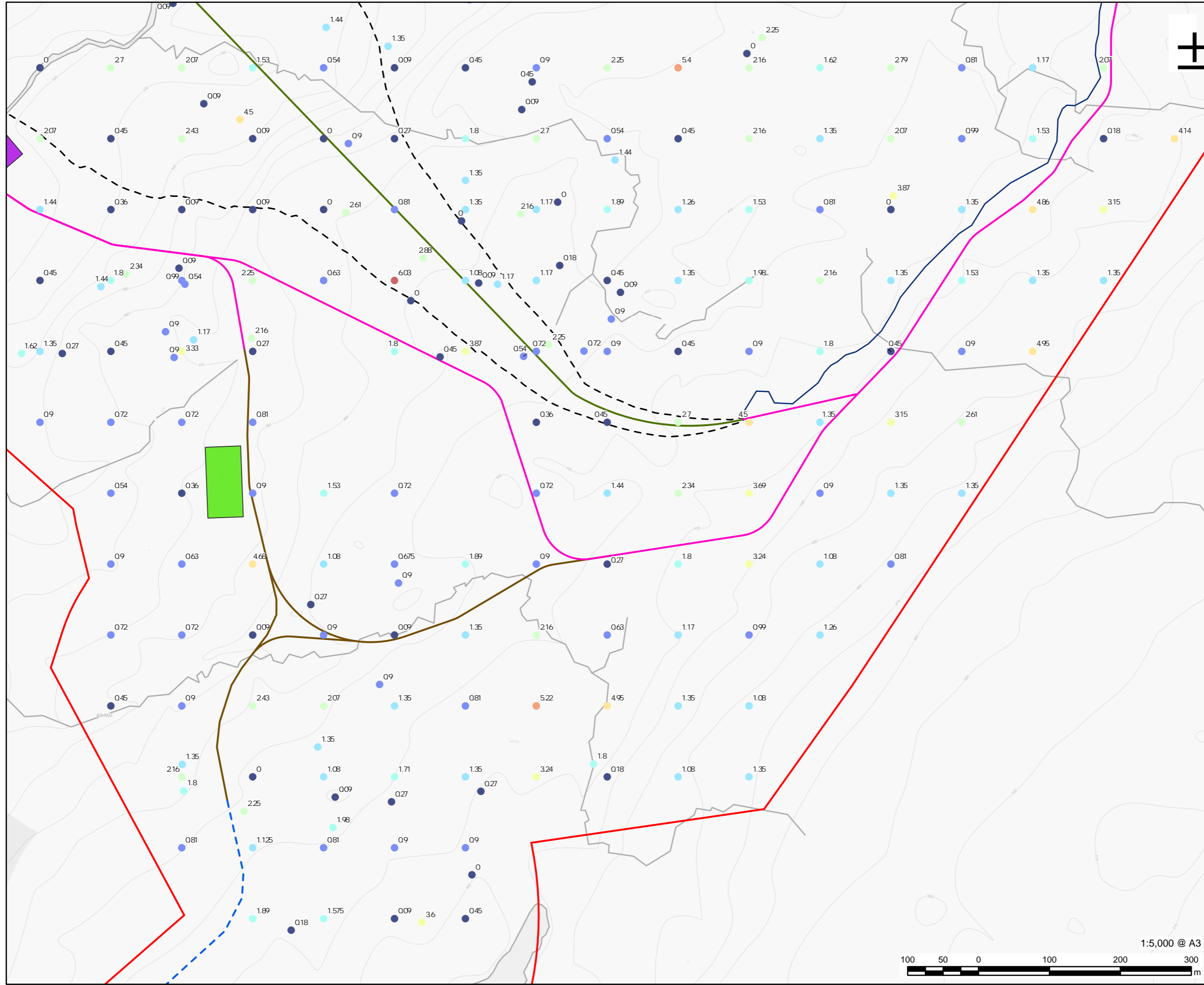
ISSUE PURPOSE
 FINAL

PROJECT NUMBER
 60570241

FIGURE TITLE
 Peat Probe Survey Results

FIGURE NUMBER
 Figure 10.4 - Page 3

This drawing has been prepared for the use of AECOM's client. It may not be used, modified, reproduced or relied upon by third parties, except as signed by AECOM or as required by law. AECOM accepts no responsibility, and denies any liability whatsoever, to any party for uses or relies on this drawing without AECOM's express written consent. Do not scale. All measurements must be obtained from the stated dimensions.



PROJECT
BALLIEMEANOCH
PUMPED STORAGE
HYDRO

CLIENT
ILI (Borders PSH) Ltd.

CONSULTANT
 AECOM Limited
 177 Bothwell Street
 Glasgow, B2 7ER
 T +44(0)141 202 0500
 www.aecom.com

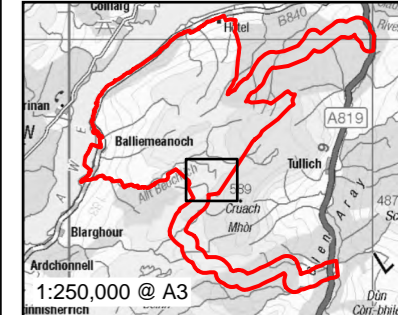
LEGEND

- Development Boundary
- Headpond
- Headpond Embankments

- 0.00 - 0.50
- 0.51 - 1.00
- 1.01 - 1.50
- 1.51 - 2.00
- 2.01 - 3.00
- 3.01 - 4.00
- 4.01 - 5.00
- 5.01 - 6.00
- 6.01+

Above Ground Infrastructure

- Access Track - Temporary, New, Excavated
- Access Track - Permanent, New, Excavated
- Access Track - Permanent, New, Floating
- - - Proposed Blarghour wind farm access track
- Temporary Construction Compound
- Permanent Construction Compound



NOTES
 Reproduced from Ordnance Survey digital map data © Crown copyright 2023.

ISSUE PURPOSE

FINAL

PROJECT NUMBER

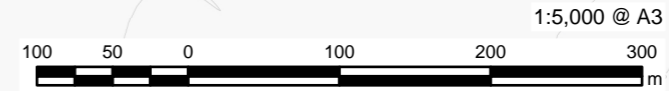
60570241

FIGURE TITLE

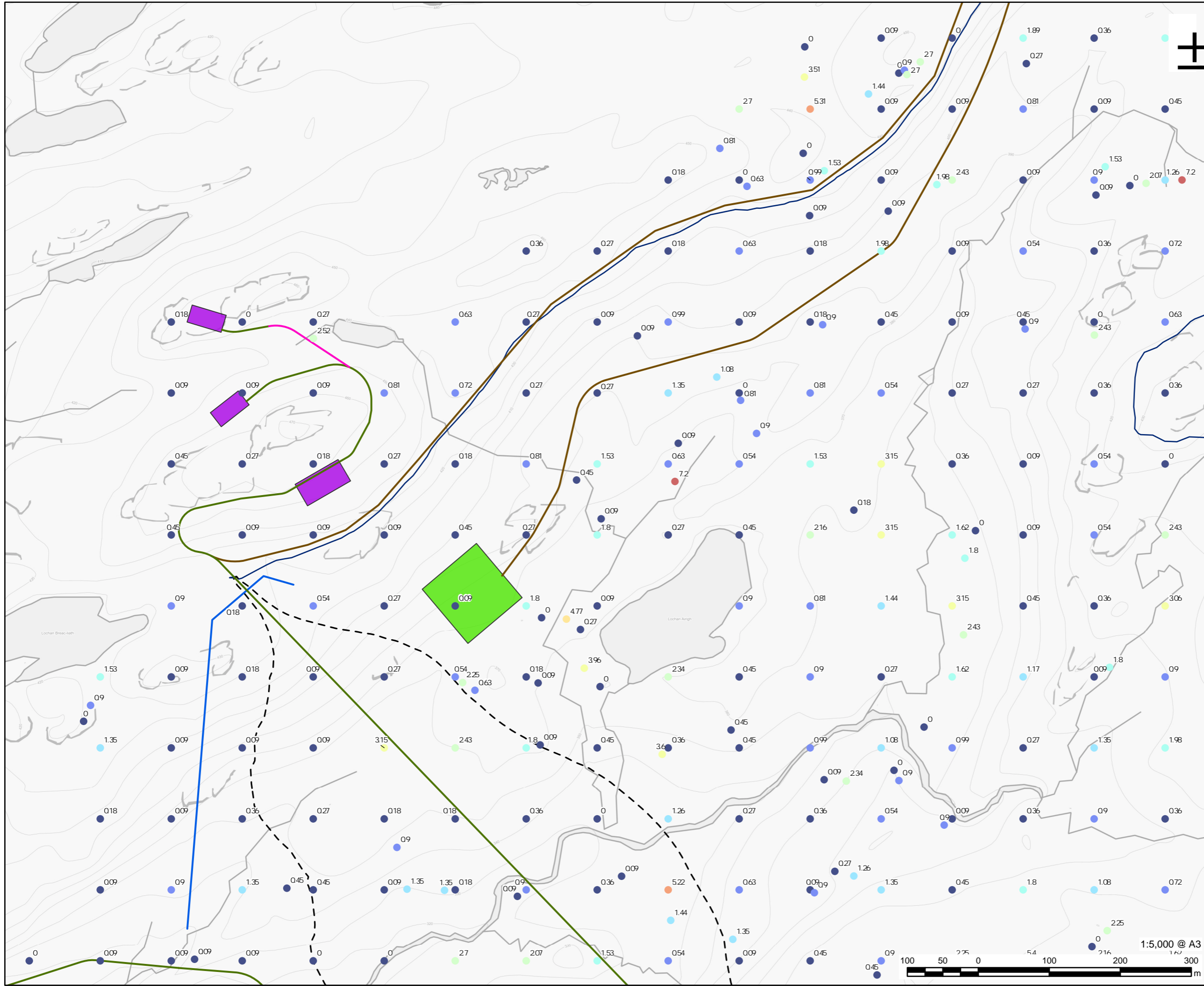
Peat Probe Survey Results

FIGURE NUMBER

Figure 10.4 - Page 4



This drawing has been prepared for the use of AECOM's client. It may not be used, modified, reproduced or relied upon by third parties, except as agreed by AECOM, as required by law. AECOM accepts no responsibility, and denies any liability whatsoever, to any party that uses or relies on this drawing without AECOM's express written consent. Do not scale. All measurements must be obtained from the stated dimensions.



PROJECT
BALLIEMEANOCH
PUMPED STORAGE
HYDRO

CLIENT
ILI (Borders PSH) Ltd.

CONSULTANT
 AECOM Limited
 177 Bothwell Street
 Glasgow, B2 7ER
 T +44(0)141 202 0500
 www.aecom.com

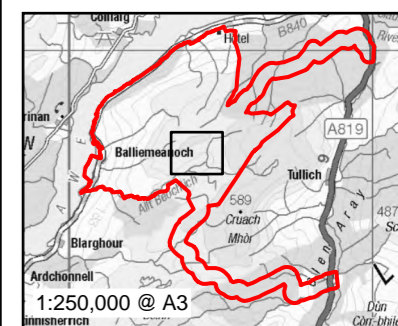
LEGEND

- Development Boundary
- Headpond
- Headpond Embankments

- 0.00 - 0.50
- 0.51 - 1.00
- 1.01 - 1.50
- 1.51 - 2.00
- 2.01 - 3.00
- 3.01 - 4.00
- 4.01 - 5.00
- 5.01 - 6.00
- 6.01+

Above Ground Infrastructure

- Spillway
- Access Track - Temporary, New, Excavated
- Access Track - Permanent, New, Excavated
- Access Track - Permanent, New, Floating
- Temporary Construction Compound
- Permanent Construction Compound



NOTES

Reproduced from Ordnance Survey digital map data © Crown copyright 2023.

ISSUE PURPOSE

FINAL

PROJECT NUMBER

60570241

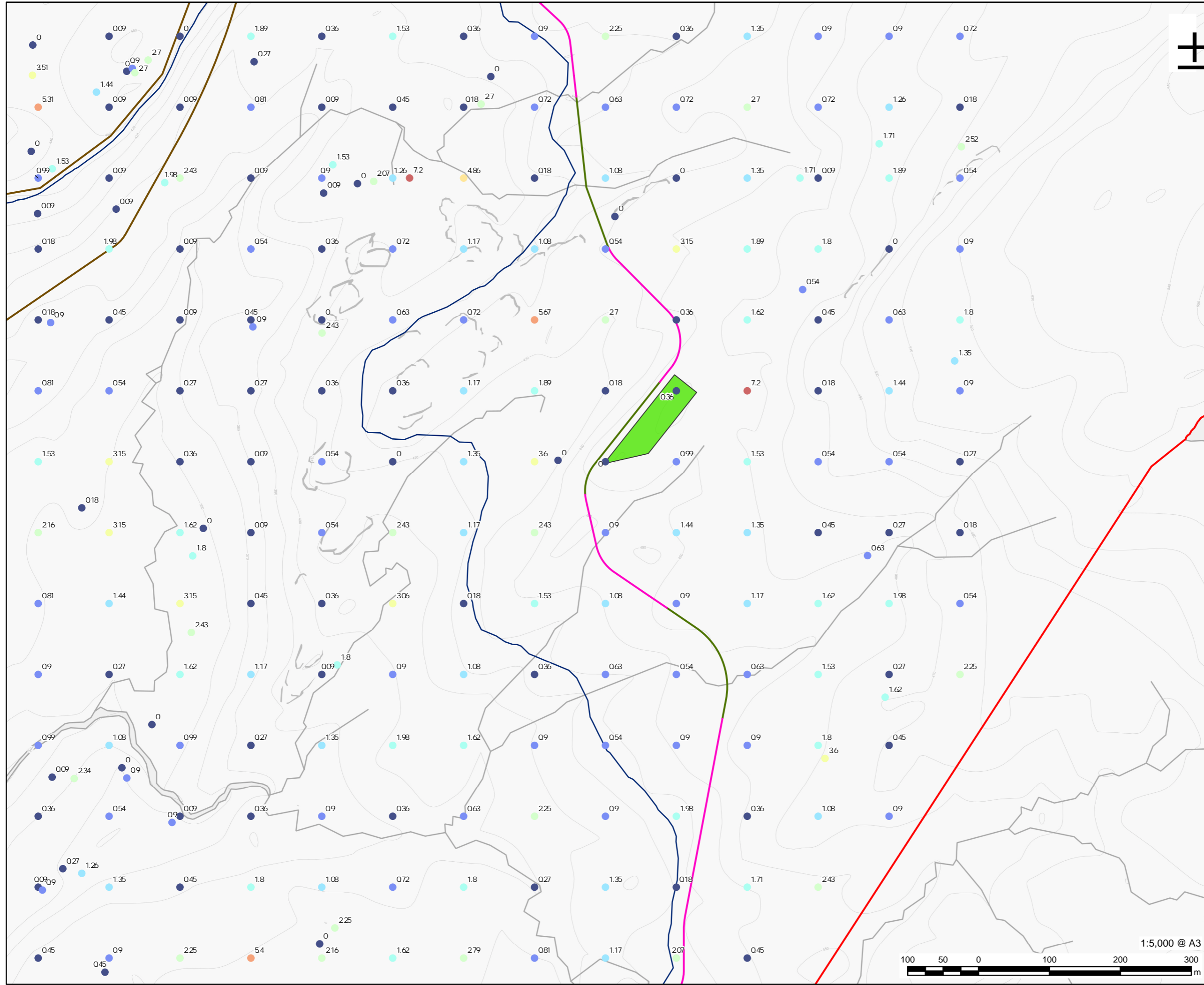
FIGURE TITLE

Peat Probe Survey Results

FIGURE NUMBER

Figure 10.4 - Page 5

This drawing has been prepared for the use of AECOM's client. It may not be used, modified, reproduced or relied upon by third parties, except as signed by AECOM or as required by law. AECOM accepts no responsibility, and denies any liability whatsoever, to any party that uses or relies on this drawing without AECOM's express written consent. Do not scale. All measurements must be obtained from the stated dimensions.



AECOM

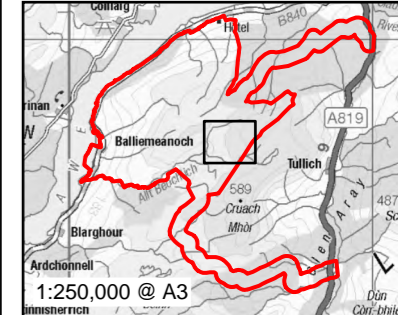
PROJECT
BALLIEMEANOCH
PUMPED STORAGE
HYDRO

CLIENT
 ILI (Borders PSH) Ltd.

CONSULTANT
 AECOM Limited
 177 Bothwell Street
 Glasgow, B2 7ER
 T +44(0)141 202 0500
 www.aecom.com

LEGEND

- Development Boundary
 - Headpond
 - 0.00 - 0.50
 - 0.51 - 1.00
 - 1.01 - 1.50
 - 1.51 - 2.00
 - 2.01 - 3.00
 - 3.01 - 4.00
 - 4.01 - 5.00
 - 5.01 - 6.00
 - 6.01+
- Above Ground Infrastructure**
- Access Track - Temporary, New, Excavated
 - Access Track - Permanent, New, Excavated
 - Access Track - Permanent, New, Floating
 - Temporary Construction Compound



NOTES
 Reproduced from Ordnance Survey digital map data © Crown copyright 2023.

ISSUE PURPOSE

FINAL

PROJECT NUMBER

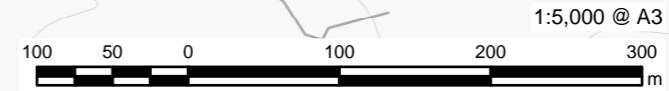
60570241

FIGURE TITLE

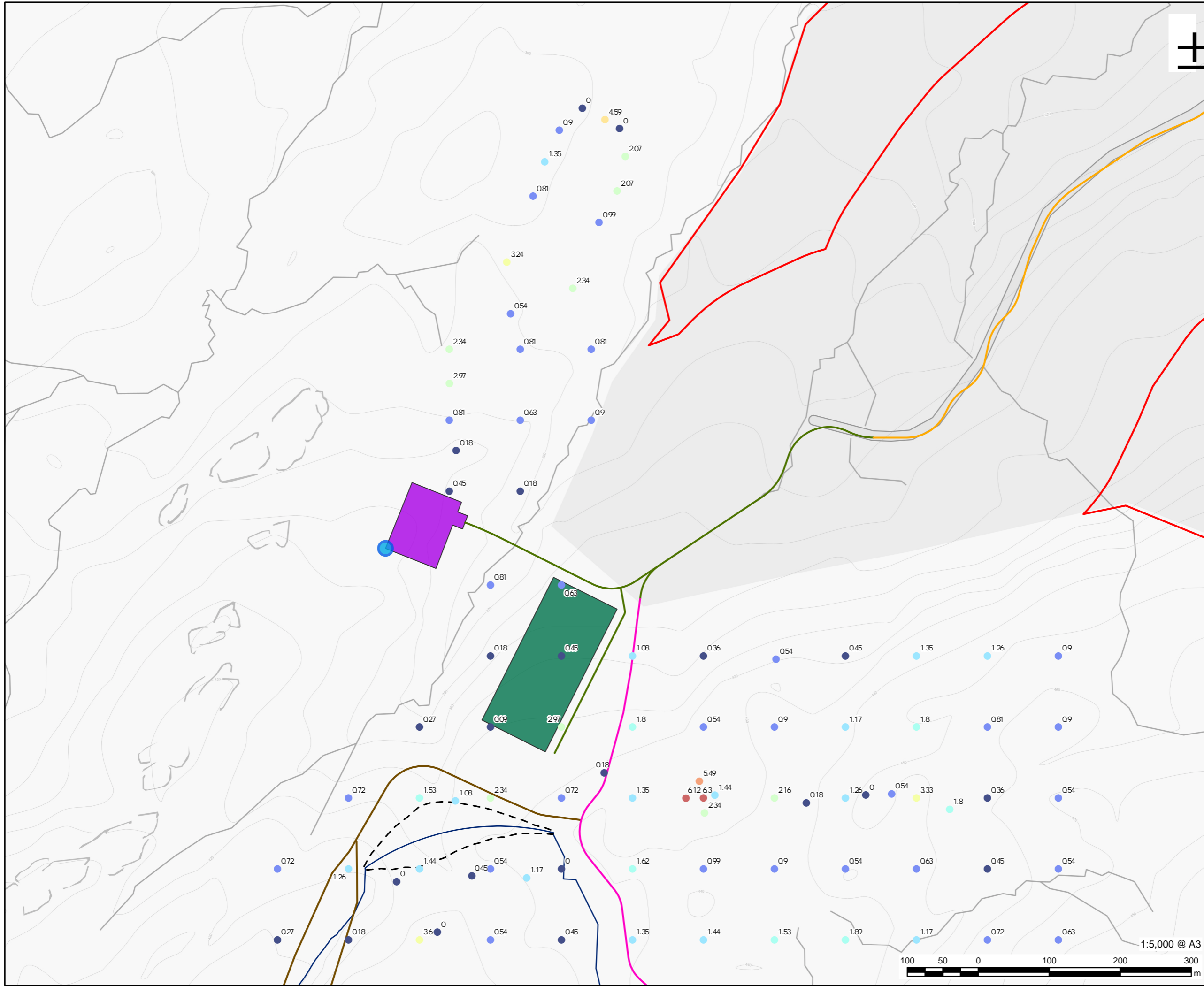
Peat Probe Survey Results

FIGURE NUMBER

Figure 10.4 - Page 6



This drawing has been prepared for the use of AECOM's client. It may not be used, modified, reproduced or relied upon by third parties, except as signed by AECOM or as required by law. AECOM accepts no responsibility, and denies any liability whatsoever, to any party that uses or relies on this drawing without AECOM's express written consent. Do not scale. All measurements must be obtained from the stated dimensions.



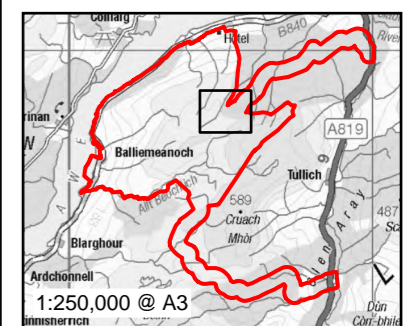
PROJECT
BALLIEMEANOCH
PUMPED STORAGE
HYDRO

CLIENT
 ILI (Borders PSH) Ltd.

CONSULTANT
 AECOM Limited
 177 Bothwell Street
 Glasgow, B2 7ER
 T +44(0)141 202 0500
 www.aecom.com

LEGEND

- Development Boundary
- Headpond
- 0.00 - 0.50
- 0.51 - 1.00
- 1.01 - 1.50
- 1.51 - 2.00
- 2.01 - 3.00
- 3.01 - 4.00
- 4.01 - 5.00
- 5.01 - 6.00
- 6.01+
- Above Ground Infrastructure**
- Access Track - Temporary, New, Excavated
- Access Track - Permanent, New, Excavated
- Access Track - Permanent, New, Floating
- Access Track - Permanent, Upgrade, Excavated
- Tunnel Portals
- Switching Station
- Permanent Construction Compound



NOTES
 Reproduced from Ordnance Survey digital map data © Crown copyright 2023.

ISSUE PURPOSE
 FINAL

PROJECT NUMBER
 60570241

FIGURE TITLE
 Peat Probe Survey Results

FIGURE NUMBER
 Figure 10.4 - Page 7

This drawing has been prepared for the use of AECOM's client. It may not be used, modified, reproduced or relied upon by third parties, except as signed by AECOM or as required by law. AECOM accepts no responsibility, and denies any liability whatsoever, to any party that uses or relies on this drawing without AECOM's express written consent. Do not scale. All measurements must be obtained from the stated dimensions.

